

THINK MODERN

Innovation, ingenuity and inclusion
from Britain's modern universities

FACTS AND STATS





What are modern universities?

Modern universities make up over half of the UK's higher education sector, educating over a million students a year.

These universities are powerhouses for and are anchored in their communities across the length and breadth of the UK.

Since the creation of modern universities in 1992, these dynamic institutions have grown into powerhouses of pioneering teaching and research, whilst retaining their mission of improving access to education and ensuring jobs and growth in their region and place.

Modern universities transform the lives of people and ensure a highly skilled workforce for employers of many kinds.

MillionPlus universities

- Are forward looking and responsive to change
- Work collaboratively with business and boost the public sector workforce
- Drive social mobility
- Deliver excellent teaching which provides the skills for students to succeed
- Are placemakers in their local area
- Produce innovative applied and translational research

MillionPlus

The Association for
Modern Universities

THINK MODERN

THINK MODERN

Modern times call for modern solutions and modern universities thrive at meeting this challenge.

With little fanfare, these universities have an enormous impact across the UK, and do much of the hard work in developing the key skills for the future jobs market.

Therefore, if government wants:

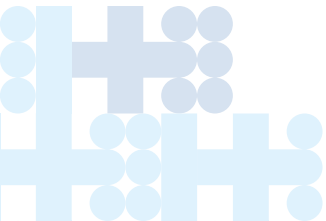
- To boost productivity through strongly work-related education and growing degree apprenticeship

- to address the gap in the recruitment and retention of teachers for schools
- to boost the public service workforce to deliver for the NHS and key services – from nurses, social workers, police, environmental officers, town planners etc
- to help industry innovate and improve through the application of real-world research
- to identify and drive technological advancements to meet tomorrow's challenges
- to increase the aspiration and opportunities for people from all walks of life by ensuring flexible pathways into higher education, supporting them on their learning journey.

...they need to #ThinkModern

#ThinkModern explores this through key facts, case studies, interviews and opinion pieces revolving around six themes – Making Britain Work; Pathways, Partnerships and Productivity; Creative and Technological Skills for the 21st Century; Innovation and Research; Aspiration, Opportunity and Inclusion; and Entrepreneurial, Enterprising, Enriching.

Modern universities are some of the UK's greatest assets in driving growth and social mobility, addressing the challenges we face in society. Across the country, it's time to embrace what they offer and unlock the potential of their students.





1. MAKING BRITAIN WORK

page 6



2. PATHWAYS, PARTNERSHIPS AND PRODUCTIVITY

page 12



3. ENTREPRENEURIAL, ENTERPRISING, ENRICHING

page 16



4. INNOVATION AND RESEARCH

page 19



5. CREATIVE AND TECHNOLOGICAL SKILLS FOR THE 21ST CENTURY

page 22



6. ASPIRATION, OPPORTUNITY AND INCLUSION

page 25



THINK MODERN

Making Britain work

Modern universities are directly responsible for training thousands of the backbone public service staff that keep Britain working.

From high-profile roles such as **teachers, nurses, social workers** and **police officers** to the less well acknowledged **town planners, architects** or **environmental health officers**, year after year modern universities create the highly skilled workforce that keeps the economy growing and society thriving.



The Graduate Market 2023 annual review of vacancies and starting salaries predicted that **public sector organisations** will remain the second largest recruiter of graduates, with a record 4,822 entry level vacancies available for university leavers.¹



NURSING & MIDWIFERY

Making Britain work



7 / 28

Modern universities provide a much-needed pipeline to the NHS in areas of the UK where there is no other local study option, playing an integral role in the regions by providing new cohorts of registered nurses.



Modern universities have a long and well-established tradition of training a major part of the nursing workforce in the UK.



70% of nursing students were at modern universities in 2021-22.

70% of midwifery students were at modern universities in 2021-22.

Modern universities have partnerships with 209 NHS Trusts in England, **93%** of all NHS Trusts.

64% of all the universities with adult nursing courses approved by the Nursing & Midwifery Council are modern universities.²



Modern universities have partnerships with every NHS Board in Scotland, covering the full length and breadth of the country's healthcare provision.



ALLIED HEALTH PROFESSIONS

Allied Health Professionals (AHP) are the third largest workforce in the health and care sector in England.

There were **318,187** registered allied health professionals working for the NHS (more than the number of GPs) in 2023.³ They are a vital pillar in the delivery of healthcare and support, upon which the NHS and the citizens of the United Kingdom rely.

In 2021–22...

78% of environmental and public health students...

69% of those studying nutrition...

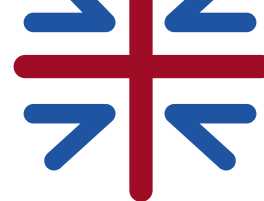
63% of those studying subjects allied to medicine...

62% of medical technology students...

Over **1,955** postgraduate research students in fields allied to medicine...

...were at modern universities.





Modern universities have a long history of teacher education, and despite a diversification of routes into teaching over recent years, these institutions continue to be at the forefront of the field, both in terms of research into pedagogy and the practice of initial teacher training and education.

In 2021–22, modern universities accounted for **63%** of all initial teacher training students in the university sector, and **75%** of those were studying the undergraduate pathway.



In 2021–22, **55%** of all those studying education at university were at modern universities.



In 2020–21, **87%** of HEI-led teacher trainers were awarded **Qualified Teacher Status**.⁵

In 2021–22, **52%** of university postgraduate students were 25 and over and **28%** were of minority ethnic groups.⁴

73% of teacher training university students from the 2020–21 cycle were teaching at a state school within 16 months after completing their course.⁶



SOCIAL WORK

Modern universities lead in the education of social workers, teaching the majority of the next generation of practitioners, developing students with the skills needed to address regional demand across the UK. Social work is also an area that has traditionally attracted high numbers of mature students, a demographic that has been a key focus of modern universities for many years.

In 2021–22...

73% of social work students...

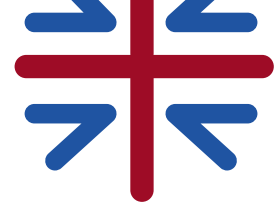
56% of social policy students...

...were at modern universities.



59% of research carried out at modern universities in social work or social policy was judged to be world-leading or internationally excellent.⁷





ARCHITECTS & TOWN PLANNERS

Modern university graduates go on to make up a substantial proportion of the workforce that design, construct and shape our public urban environment.

Modern universities equip students in these areas with skills and knowledge that are used in **urban development, regeneration and infrastructure projects** across the UK.

In 2021–22...

60% of architecture students....

41% of urban, rural and regional planning students...

...were at modern universities.



¹ High Fliers (2023), the Graduate Market in 2023 annual review of graduate vacancies and starting salaries at the UK's leading employers

² Nursing & Midwifery Council list of approved courses

³ Health and Care Professions Council, Registrant snapshot 1 March 2023

⁴ Department for Education, Initial Teacher Training Census 2021–2022, Find Statistics and data

⁵ Department for Education, Initial Teacher Training performance profiles: 2020–21

⁶ Ibid.

⁷ Overall averages calculated from REF 2021 results

*HEI = Higher Education Institution. All data taken from HESA records 2021–22 and refer to undergraduates unless otherwise stated. Throughout, KEF data relates to KEF3 published in September 2023.

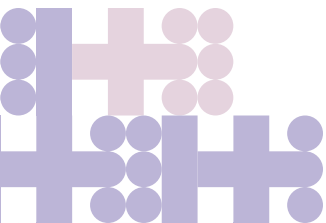
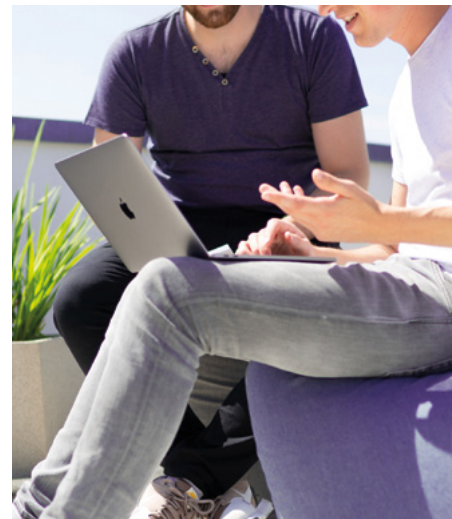
THINK MODERN



Pathways, partnerships and productivity

Vocational, technical and professional education has been the beating heart of modern universities from the very start.

Working in partnership with employers, often in their local regions, they have created **high-quality, work-focused courses** that ensure graduates are fully equipped with the skills and knowledge they need to be job-ready on day one. These modern universities are driving forward the degree apprenticeship agenda that will create **new opportunities for young people**.





In 2021–22 modern universities received...

...**£17 million** in income from regeneration and development programmes.

...over **£45 million** in European Regional Development Fund (ERDF) income.



Modern universities are vital actors in their local areas, with the latest KEF data showing strong performance in contributing to local growth and regeneration with a score **68.4%** (3.42 out of 5).

The data also shows that these universities are playing a significant role in driving local regeneration and development projects, again scoring **68.4%**.



BUSINESS INTERACTION

All modern universities offer professional business advice to start ups, provided by the university or in collaboration with a partner organisation.

In KEF, modern universities scored **54.6%** (2.73 out of 5) for working with the business sector.



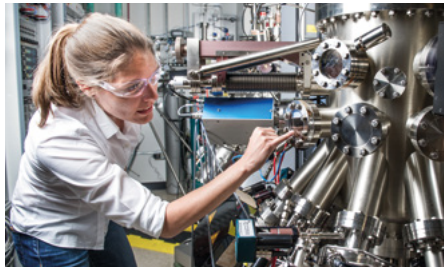
In terms of public and community engagement, these universities scored **57.8%** (2.89 out of 5).

DEGREE APPRENTICESHIPS

60% of universities on the apprenticeship training provider register are modern universities, showing that these institutions are at the forefront of the development of degree apprenticeships.¹



Across modern universities in England and Scotland, the number of students beginning degree apprenticeships in 2021–22 is **22,191**, representing year-on-year growth of more than **8%**.



HEALTH PARTNERSHIPS

Modern universities have partnerships with...

...**209** NHS Trusts in England, which amounts to **93%** of all NHS trusts.



...**Every** NHS Board in Scotland, covering the full length and breadth of the country's healthcare provision.

MILLIONPLUS UNIVERSITIES BUSINESS EMPLOYER PARTNERSHIPS

Pathways, partnerships
and productivity

15 / 28



¹ Education & Skills Funding Agency, Register of apprenticeship training providers.

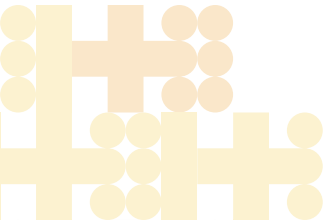
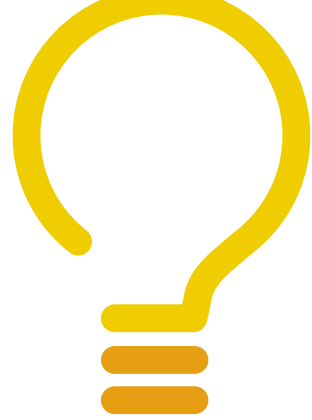
All data taken from **HESA records 2021–22** and refer to undergraduates unless otherwise stated.

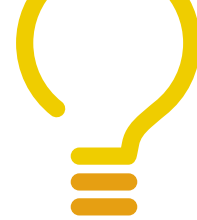


Entrepreneurial, enterprising, enriching

Modern universities have found ways to unleash ingenuity by placing entrepreneurialism at the centre of the curriculum.

They support students in **creating businesses, social enterprises and charities well before they have graduated.** This provides them with enriched expertise and experience which benefits them whether they become employers or employees.





BUSINESS AND COMMUNITY SERVICES

In 2021–22, modern universities provided services¹ to:

21,201 SMEs
(small and medium enterprises).

2,696 non-SMEs.

10,624
non-commercial
organisations.



SPIN-OFFS AND START UP COMPANIES

The most recent KEF data shows strong modern university performance in the area of graduate startups, scoring **65.4%** (3.27 out of 5), indicating a vibrant entrepreneurial culture among students.



Graduate start-ups linked to modern universities are estimated to have generated **£834 million** in turnover.

Graduate start-ups linked to modern universities are estimated to have employed **19,472 people**.



SPIN-OFFS AND START UP COMPANIES

The most recent KEF data shows that modern universities are investing in the area of CPD and graduate startups, scoring **66.8%** (3.34 out of 5).



Indicating a strong commitment to continuing professional development and continuing education in the workforce, modern universities scored **62.2%** (3.11 out of 5) in the latest KEF in the area of HE-BCI CPD/CE Income, normalised by HEI income.



Graduate start-ups linked to modern universities are estimated to have generated **£42 million** in external investment.

¹ Services include contract research, consultancy and facilities/equipment.
All data taken from **HESA records 2021-22** and refer to undergraduates unless otherwise stated.



Innovation and research

Modern universities are crucial regional anchors.

Researchers and academics at these universities are vital in ensuring that businesses – especially the small and medium enterprises that are the lifeblood

of the UK's towns, communities, regions and nations – can benefit from expertise in research and innovation. Modern universities are essential in bringing these experts closer to business, supporting them in providing solutions to major challenges and driving economic growth in all parts of the country.



INNOVATION AND RESEARCH

In 2021–22 modern universities received...

... **£99** million from UK research councils for research contracts.

... **£55** million from EU government bodies for research contracts.

... **£95** million from central government bodies, local authorities and health and hospital authorities for research contracts.



RESEARCH AND IMPACT

Research at modern universities judged to be world-leading or internationally excellent...

... **58%** overall...

... **70%** in Allied Health Professions, Nursing and Pharmacy...

... **68%** in Art and Design...

... **67%** in Communications, Cultural and Media Studies.¹



In terms of impact, **63%** of research carried out at modern universities was judged to be world-leading or internationally excellent.²

NUMBER OF POSTGRADUATE RESEARCH STUDENTS

In 2021–22....

3,305 in business and management studies

1,955 in subjects allied to medicine

2,190 in education

1,620 in the biological sciences

...were at modern universities.





Percentage of modern university research found to be world leading or internationally excellent in REF2021...



70% in Allied Health Professions, Dentistry, Nursing and Pharmacy



62.6% in Engineering



59.3% in Social Work and Social Policy



62.6% overall in terms of impact



68.2% in Art and Design: History, Practice and Theory



71% in Architecture, Built Environment and Planning



66.6% in Communication, Cultural and Media Studies, Library and Information Management

¹ Overall averages for modern universities calculated from REF2021 results.

² Ibid.

All data taken from **HESA records 2021–22** and refer to undergraduates unless otherwise stated.

THINK MODERN

Creative and technological skills for the 21st century

Modern universities have pioneered new degrees to ensure that the businesses of the 21st century can benefit from a high-calibre workforce, skilled in **Science**, **Technology**, **Engineering**, the **Arts** and **Maths**.

Innovative courses once seen as huge risks are now well-established in the higher education sector, combining new and traditional skills across diverse, once separate disciplines.

This age of **STEAM** is digital.



THE CREATIVE ECONOMY IN THE UK

Creative and technological
skills for the 21st century



23 / 28

The creative industries employ over **2 million** people in the UK and are projected to create an additional **1 million** jobs by 2030.¹

The creative industries exported **£36 billion** in services worldwide and accounted for almost **12%** of UK services exports.²



It is estimated that the creative industries will be worth **£128.4 billion** by 2025.³

The UK video games market was valued at **£7.16 billion** in 2021, one of the fastest growing sectors of the economy.⁴



RESEARCH AND IMPACT IN STEAM

71% of research carried out at modern universities in Architecture, Built Environment and Planning.

63% of research carried out at modern universities in the category of General Engineering.



...was judged to be world-leading or internationally excellent in terms of its originality, significance and rigour.⁵

REVOLUTIONISING STEAM

In 2021–22...



92% of computer games students...

78% of cinematography and photography students...



73% of creative arts students...

38% of computer science students...



70% of software engineering students...



83% of design studies students...

44% of ecology and environmental biology students...



69% of architecture, building and planning students...

43% of civil engineering students...



49% of computer generated and visual effects students...



72% of maritime technology students...

100% of minerals technology students...

...were at modern universities.



¹ Creative Industries Federation statistics 2020–21.

² Ibid.

³ Sir Peter Bazalgette, “Independent Review of the Creative Industries” 2017.

⁴ The Association for UK Interactive Entertainment, 2021.

⁵ Overall averages for modern universities calculated from REF2021 results.

All data taken from **HESA records 2021–22** and refers to undergraduates unless otherwise stated.

THINK MODERN

Aspiration, opportunity, inclusion

Modern universities have increased the opportunities for people from all walks of life to experience the transformative impact of higher education.

Mature learners, people already in work, and all those who thought higher education was only for others have been able to **unlock their potential** and **create new careers for themselves and new lives for their families**. This diversity of approach and student profile is a key pillar of the modern university sector.



LEADING THE WAY IN WIDENING PARTICIPATION...

97% of entrants to modern universities went to a state school.



In England...

64% of all HE entrants from a low participation background were studying at modern universities.

Modern universities accounted for **79%** of full-time mature entrants to higher education.

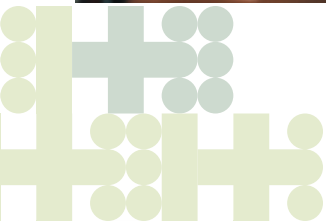
In Scotland...

A third of universities are modern, but they account for **56%** of full-time entrants to university from the most disadvantaged backgrounds and **68%** of mature students.¹

In 2021–22, **64%** of Black students in the UK were at modern universities.



All modern universities identified **widening participation/ access** as one of the principal areas in which they **contribute to the local economy**.



...AND EQUALITY OF OPPORTUNITY

Aspiration, opportunity,
inclusion

27 / 28



89% of modern universities
provide distance learning courses.

88% of modern universities
provide continuous work-based
learning courses.

171,306 people attended
free performance arts
events organised by
modern universities
in 2021–22.



37,918 people attended
paid exhibitions at modern
universities.

161,748 people attended paid
performance arts events at
modern universities.

802,891 people
attended free
public lectures at
modern universities.



1,129,828 people
attended free
public exhibitions at
modern universities.



¹ Scottish Funding Council, Report on Widening Access 2020–21.

All data taken from **HESA records 2021–22** and refer to undergraduates unless otherwise stated.



MillionPlus

The Association for
Modern Universities

THINK
MODERN

Call +44 (0)20 3927 2918 Email info@millionplus.ac.uk www.millionplus.ac.uk

Copyright © MillionPlus. No part of this document may be used or reproduced without MillionPlus's express permission in writing. Published January 2024.