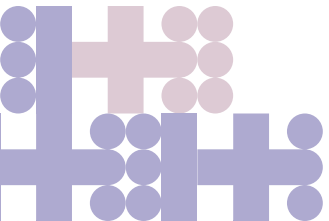
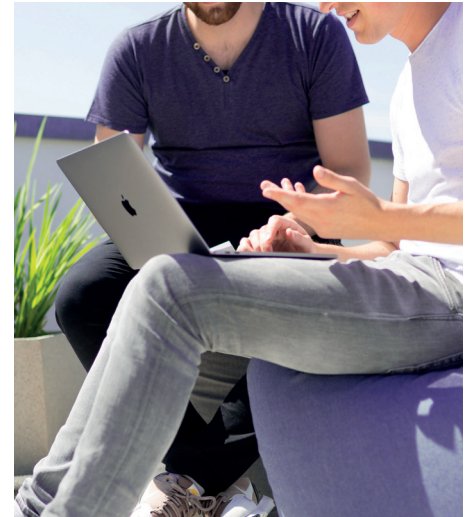




Pathways, partnerships and productivity

Vocational, technical and professional education has been the beating heart of modern universities from the very start.

Working in partnership with employers, often in their local regions, they have created **high-quality, work-focused courses** that ensure graduates are fully equipped with the skills and knowledge they need to be job-ready on day one. These modern universities are driving forward the degree apprenticeship agenda that will create **new opportunities for young people**.





In 2021–22 modern universities received...

...**£17 million** in income from regeneration and development programmes.

...over **£45 million** in European Regional Development Fund (ERDF) income.



Modern universities are vital actors in their local areas, with the latest KEF data showing strong performance in contributing to local growth and regeneration with a score **68.4%** (3.42 out of 5).

The data also shows that these universities are playing a significant role in driving local regeneration and development projects, again scoring **68.4%**.



BUSINESS INTERACTION

All modern universities offer professional business advice to start ups, provided by the university or in collaboration with a partner organisation.

In KEF, modern universities scored **54.6%** (2.73 out of 5) for working with the business sector.

In terms of public and community engagement, these universities scored **57.8%** (2.89 out of 5).



DEGREE APPRENTICESHIPS

Pathways, partnerships
and productivity

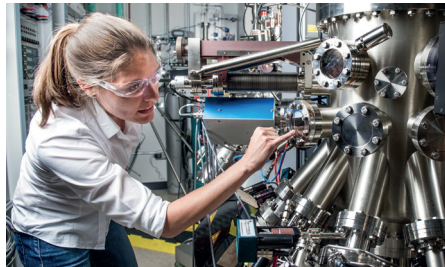


3 / 4

60% of universities on the apprenticeship training provider register are modern universities, showing that these institutions are at the forefront of the development of degree apprenticeships.¹



Across modern universities in England and Scotland, the number of students beginning degree apprenticeships in 2021–22 is **22,191**, representing year-on-year growth of more than **8%**.



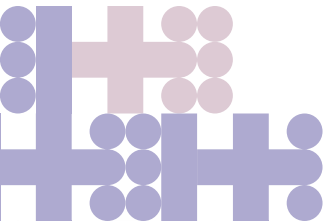
HEALTH PARTNERSHIPS

Modern universities have partnerships with...

...**209** NHS Trusts in England, which amounts to **93%** of all NHS trusts.



...**Every** NHS Board in Scotland, covering the full length and breadth of the country's healthcare provision.



MILLIONPLUS UNIVERSITIES BUSINESS EMPLOYER PARTNERSHIPS

Pathways, partnerships
and productivity

4 / 4



¹ Education & Skills Funding Agency, Register of apprenticeship training providers.

All data taken from **HESA records 2021-22** and refer to undergraduates unless otherwise stated.