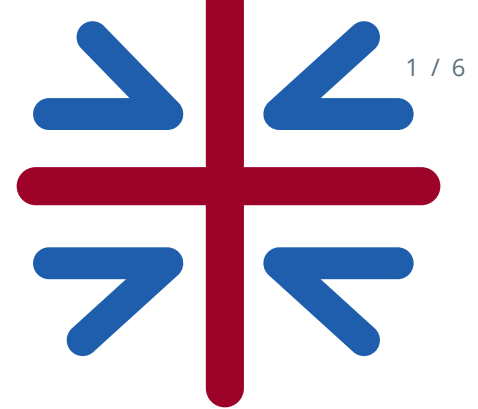


# THINK MODERN

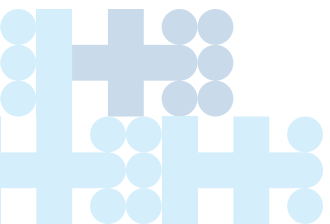
## Making Britain work

Modern universities are directly responsible for training thousands of the backbone public service staff that keep Britain working.

From high-profile roles such as **teachers, nurses, social workers** and **police officers** to the less well acknowledged **town planners, architects** or **environmental health officers**, year after year modern universities create the highly skilled workforce that keeps the economy growing and society thriving.



The Graduate Market 2023 annual review of vacancies and starting salaries predicted that **public sector organisations** will remain the second largest recruiter of graduates, with a record 4,822 entry level vacancies available for university leavers.<sup>1</sup>





# NURSING & MIDWIFERY

Modern universities provide a much-needed pipeline to the NHS in areas of the UK where there is no other local study option, playing an integral role in the regions by providing new cohorts of registered nurses.



Modern universities have a long and well-established tradition of training a major part of the nursing workforce in the UK.



**70%** of nursing students were at modern universities in 2021-22.

**70%** of midwifery students were at modern universities in 2021-22.

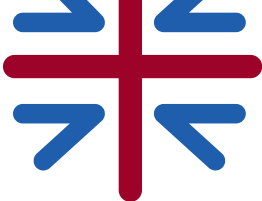
Modern universities have partnerships with 209 NHS Trusts in England, **93%** of all NHS Trusts.

**64%** of all the universities with adult nursing courses approved by the Nursing & Midwifery Council are modern universities.<sup>2</sup>



Modern universities have partnerships with every NHS Board in Scotland, covering the full length and breadth of the country's healthcare provision.





# ALLIED HEALTH PROFESSIONS

Allied Health Professionals (AHP) are the third largest workforce in the health and care sector in England.

There were **318,187 registered allied health professionals** working for the NHS (more than the number of GPs) in 2023.<sup>3</sup> They are a vital pillar in the delivery of healthcare and support, upon which the NHS and the citizens of the United Kingdom rely.

In 2021–22...

**78%** of environmental and public health students...

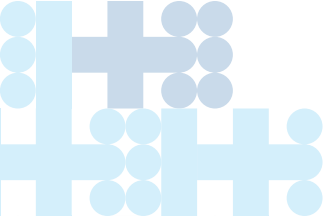
**69%** of those studying nutrition...

**63%** of those studying subjects allied to medicine...

**62%** of medical technology students...

Over **1,955** postgraduate research students in fields allied to medicine...

...were at modern universities.





Modern universities have a long history of teacher education, and despite a diversification of routes into teaching over recent years, these institutions continue to be at the forefront of the field, both in terms of research into pedagogy and the practice of initial teacher training and education.



In 2021–22, modern universities accounted for **63%** of all initial teacher training students in the university sector, and **75%** of those were studying the undergraduate pathway.



In 2021–22, **55%** of all those studying education at university were at modern universities.

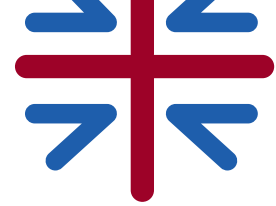


In 2020–21, **87%** of HEI-led teacher trainers were awarded Qualified Teacher Status.<sup>5</sup>

In 2021–22, **52%** of university postgraduate students were 25 and over and **28%** were of minority ethnic groups.<sup>4</sup>

**73%** of teacher training university students from the 2020–21 cycle were teaching at a state school within 16 months after completing their course.<sup>6</sup>





Modern universities lead in the education of social workers, teaching the majority of the next generation of practitioners, developing students with the skills needed to address regional demand across the UK. Social work is also an area that has traditionally attracted high numbers of mature students, a demographic that has been a key focus of modern universities for many years.

In 2021–22...

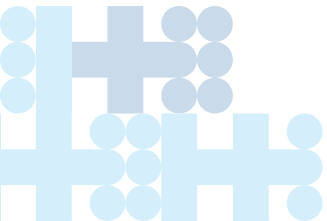
**73%** of social work students...

**56%** of social policy students...

...were at modern universities.



**59%** of research carried out at modern universities in social work or social policy was judged to be world-leading or internationally excellent.<sup>7</sup>



# ARCHITECTS & TOWN PLANNERS

Modern university graduates go on to make up a substantial proportion of the workforce that design, construct and shape our public urban environment.

Modern universities equip students in these areas with skills and knowledge that are used in **urban development, regeneration and infrastructure projects** across the UK.

In 2021–22...

**60%** of architecture students...

**41%** of urban, rural and regional planning students...

...were at modern universities.



<sup>1</sup> High Fliers (2023), the Graduate Market in 2023 annual review of graduate vacancies and starting salaries at the UK's leading employers

<sup>2</sup> Nursing & Midwifery Council list of approved courses

<sup>3</sup> Health and Care Professions Council, Registrant snapshot 1 March 2023

<sup>4</sup> Department for Education, Initial Teacher Training Census 2021–2022, Find Statistics and data

<sup>5</sup> Department for Education, Initial Teacher Training performance profiles: 2020–21

<sup>6</sup> Ibid.

<sup>7</sup> Overall averages calculated from REF 2021 results

\*HEI = Higher Education Institution. All data taken from HESA records 2021–22 and refer to undergraduates unless otherwise stated.

Throughout, KEF data relates to KEF3 published in September 2023.