

THINK MODERN

Innovation and research

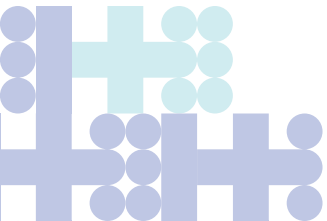
Modern universities are crucial regional anchors.

Researchers and academics at these universities are vital in ensuring that businesses – especially the small and medium enterprises that are the lifeblood

of the UK's towns, communities, regions and nations – can benefit from expertise in research and innovation. Modern universities are essential in bringing these experts closer to business, supporting them in providing solutions to major challenges and driving economic growth in all parts of the country.



1 / 3



INNOVATION AND RESEARCH



In 2021–22 modern universities received...

... **£99** million from UK research councils for research contracts.

... **£55** million from EU government bodies for research contracts.

... **£95** million from central government bodies, local authorities and health and hospital authorities for research contracts.



RESEARCH AND IMPACT

Research at modern universities judged to be world-leading or internationally excellent...

...**58%** overall...

...**70%** in Allied Health Professions, Nursing and Pharmacy...

...**68%** in Art and Design...

...**67%** in Communications, Cultural and Media Studies.¹



In terms of impact, **63%** of research carried out at modern universities was judged to be world-leading or internationally excellent.²

NUMBER OF POSTGRADUATE RESEARCH STUDENTS

In 2021–22....

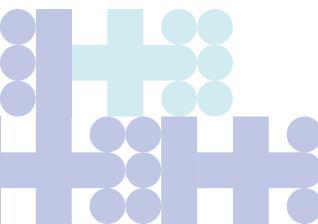
3,305 in business and management studies

1,955 in subjects allied to medicine

2,190 in education

1,620 in the biological sciences

...were at modern universities.





Percentage of modern university research found to be world leading or internationally excellent in REF2021...



70% in Allied Health Professions, Dentistry, Nursing and Pharmacy



62.6% in Engineering



59.3% in Social Work and Social Policy



68.2% in Art and Design: History, Practice and Theory



66.6% in Communication, Cultural and Media Studies, Library and Information Management



62.6% overall in terms of impact



71% in Architecture, Built Environment and Planning

¹ Overall averages for modern universities calculated from REF2021 results.

² Ibid.

All data taken from **HESA records 2021–22** and refer to undergraduates unless otherwise stated.