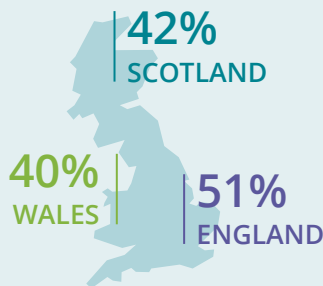




53% undergraduates
41% postgraduates

Modern universities teach 53% of all UK undergraduates and 41% of all UK postgraduate students.



Modern universities make up 51% of the university sector in England, 42% in Scotland and 40% in Wales.

1.13 million

2.26 million students study at UK universities in 2015, half at modern universities.



36% of all international students study at modern universities, helping to boost both the economy and the UK's global reputation.

MillionPlus is the Association for Modern Universities in the UK, and the voice of 21st century higher education

WE champion, promote and raise awareness of the essential role played by modern universities in world-leading higher education.

WE are dedicated to a quality university system which includes and supports anyone who has the ambition, talent and desire to succeed in higher education.

WE are driven by a strong commitment to robust research and evidence-based policy decisions in order to support a successful and flourishing UK higher education system, which can rise to the global economic, social and cultural challenges of the 21st century.

What are modern universities?

- Modern universities are **long-established** centres of higher education in their communities with roots that stretch back decades, if not centuries. Many gained university title following legislation agreed by parliament in 1992.
- Modern universities are **in every city and region**, making up almost half of the entire UK university sector.
- Modern universities are a **popular choice** for students, with over a million students studying at modern universities every single year.
- Modern universities are **ground-breaking**, with over half of all their research assessed as world-leading or internationally excellent, and almost two thirds judged as having an outstanding or very considerable impact in terms of its reach and significance.

Modern universities are diverse, and are major forces for social mobility



72% of modern university students are from areas of the UK with lower levels of HE participation.

66% of modern university students come from lower income households.

60% of Black, Asian and minority ethnic (BAME) students study at a modern university.

Working with business to drive forward the economy

Education exports will reach

£17 billion by 2025

Our world-leading modern universities are a major UK success story and BIS estimates that the total value of higher education exports will reach £17bn by 2025.



Graduates of modern universities make up **72%** of all graduate start-up businesses still active after 3 years.

10%

From the cutting edge to the long-established, universities remain hugely important contributors to the UK economy – with a return on public investment of over **10%**.

Modern universities are the driving force of 21st century education, expanding opportunities in the digital age

They offer degree courses in pioneering areas of the economy, often as world leaders in their field. For example, modern universities teach:

70%



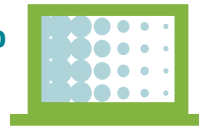
of current software engineering students

95%



of those studying Computer Games

98%



of CG Visual and Audio Effect specialists

60%



of computer scientists

Improving health, education and culture

Modern universities are at the forefront of health and social care training across the UK, educating **two thirds** of all students studying subjects allied to medicine and almost **three quarters** of all social work students

These include:



74%

studying medical technology

74%

studying nursing

71%

studying nutrition

53%

studying pharmacology



Modern universities are influential centres of the creative arts and design, with 73% of all undergraduates and 49% of all postgraduates studying these subjects at a Modern University.

DCMS values the UK's creative industries at £84.1 billion a year.



In partnership with schools, modern universities educate our future teachers, with almost half of all students studying Initial Teacher Training doing so at a modern university.